

P. O. Box 516
Prairie du Chien, WI 53821-0516
(608) 326-6346 Office
(608) 326-8061 Fax

Galen's Registry

No. 089388

September 16, 2008

SJ&F Material Handling,

As of the above date, all of the following information is accurate to my knowledge.

1969 426 HEMI PLYMOUTH Road Runner 2 Door Coupe VIN RM21J9G241523 is now in the Registry.

There were 356 - 1969 426 HEMI PLYMOUTH Road Runner 2 Door Coupe's built to Spec's for USA, 194 4Spds and 162 Autos, plus 22 Canadian. Export figures are unknown.

VEHICLES CURRENTLY REGISTERED IN GALEN'S REGISTRY
As of the above date, it is # 37 of 50 in VIN sequence of all 1969 426 HEMI PLYMOUTH Road Runner 2 Door Coupe's accounted for at the St. Louis, MO plant and built to spec's for: **the U.S.A.**

1969 426 HEMI PLYMOUTH Road Runner 2 Door Coupe's were also built at the Lynch Road, MI plant.

For more detailed production figures including sales codes, ask for the Option & Accessories Report. Available for US Ordered cars only.

If there is anything else I can do for you, do not hesitate to call or write.


Galen V. Govier

Registered
002 - RM21J9A's USA
022 - RM21J9A's CANADA
001 - RM21J9A's EXPORT
050 - RM21J9G's USA

GVG/gg

This document does not automatically mean that I have inspected the vehicle, or that I am stating it is an all numbers matching vehicle.

Keep the Faith

B31 HD DRUM BRAKES 1969 RM2*J
 11x3.0"-Drum Brakes-Front, MANUAL ADJUSTMENT
 11x2.5"-Drum Brakes-Rear, MANUAL ADJUSTMENT
 Effective lining area: 234.1 sq. in.
 Total swept area: 380.1 sq. in.

B51 Power Brakes Optional.
 Standard on Road Runner.

D21 4-SPEED MANUAL TRANSMISSION 1969 RM2*J
 Type: A833 New Process

D56 3.54:1 Gear Ratio 9.75" Axle w/Sure-Grip 426 HEMI
 D58 4.10:1 Gear Ratio 9.75" Axle w/Sure-Grip OPTIONAL
 11.0 x 7.00" Clutch Size, 426 HEMI
 18 Spline Input w/11.0" Clutch-2.65 low gear 426 HEMI
 -PN: 3410605 B-BODY 426 HEMI
 "HURST" Shifter & Linkage,
 Dash Mounted Reverse Light.
 Floor Shift with wood grain knob.
 Standard on Road Runner.

E74 426 HEMI ENGINE; STAGE II 1969 RM2*J
 A-102 PACKAGE,
 A 12-month/12,000-mile warranty applies and is limited to
 the original purchaser.

STD 37 amp Alternator w/3.0" Double Groove, 2875549
 STD Voltage Regulator 2098300
 F25 70 amp Battery, SERIES 27 - RED CAP 2642969
 STD Starter w/4Spd, DIRECT DRIVE 2642930
 J25 3 Speed Wipers w/Electric Washers,
 STD Dual Exhaust System with Resonators,
 STD Chrome Exhaust Tips,
 Stage II - Solid Lifters & 6qt Oil Pan,
 3/8" Fuel Line with 1/4" Fuel Vapor Return Line,
 Dual Breaker Distributor #: IBS-4014A, 2875140
 Distributor Control Valve w/Green Cap,
 Horsepower: 425hp@5000RPM
 Torque Lbs. Ft: 490@4000RPM,
 Firing Order: 1-8-4-3-6-5-7-2,
 Spark Plugs: Champion N10Y
 Compression ratio: 10.25:1,
 Bore & Stroke: 4.25" x 3.75"
 Fuel Recommended: Premium.
 Front Carburetor #: 46198 ALL
 Rear Carburetor #: 46208 4SPD
 Rear Carburetor #: 46218 AUTO
 Engine Color: Orange.
 Optional on Road Runner.

CONTINUED

V21 PERFORMANCE HOOD TREATMENT 1969 RM2*J
 Dual black painted stripes from front of hood to windshield.
 Woven screen will be painted Red with N96.
 Ribbed hood insert will be Black without N96.
 Optional on Road Runner.

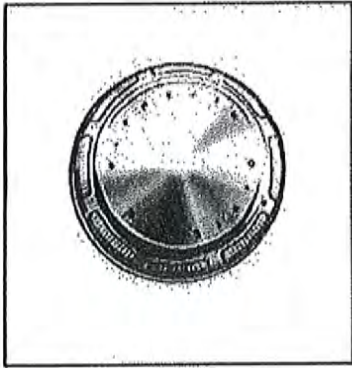
Y14 SOLD CAR 1969 RM2*J
 This is a vehicle that is ordered to a customer's liking,
 then the order is sent back to Chrysler for Assembly.
 NOTE: This is not the same as a Special Order.

STD TIRES 1969 RM2*J
 U65 F 70 X 15" Red Streak Good-Year Polyglas HEMI ENGINE
 U64 F 70 X 15" Whitewall Good-Year Polyglas OPTIONAL

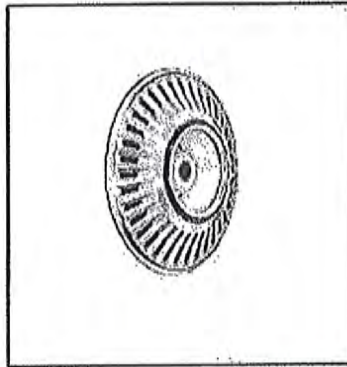
STD "ROAD" WHEELS 1969 RM2*J
 W25 15 x 6.0" H.D. Stamped-Painted Body Color w/Hubcaps HEMI ENGINE
 W11 15 x 6.0" Stamped Black w/Deluxe Wheel Covers OPTIONAL

STD SPARE TIRE/WHEEL 1969 RM2*J
 Spare Tire will be identical to 4 on "Road".
 Spare Wheel will be identical to 4 on "Road", exc w/W11.
 Stamped Steel-Painted Body Color w/Hubcaps
 W11 Stamped Steel-Painted Black w/Deluxe Wheel Covers

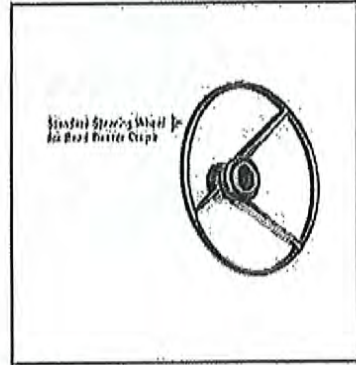
1969 PLYMOUTH Belvedere Hemi only.



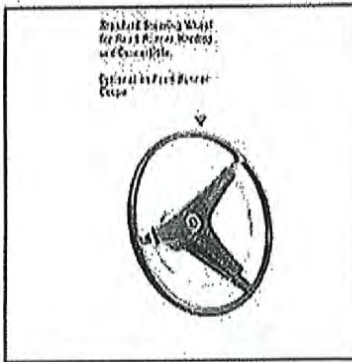
Standard 16" Hubcap.
No sales code.
PN: 2944088.



Optional 16" Wheel Cover.
S/C: W11.
PN: 2881753.



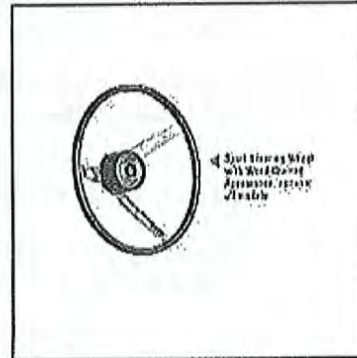
Std. on Coupe.
No sales code.



Standard exc Coupe.
S/C: S79.



Optional steering wheel.
S/C: S78.

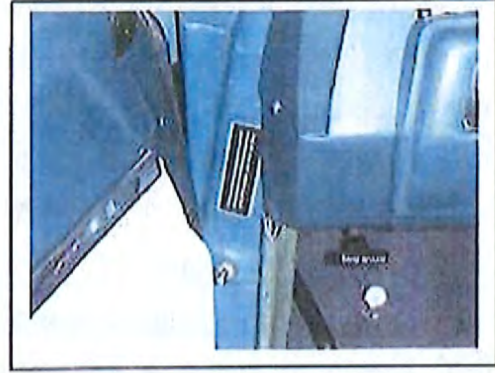


Optional steering wheel.
S/C: S81.

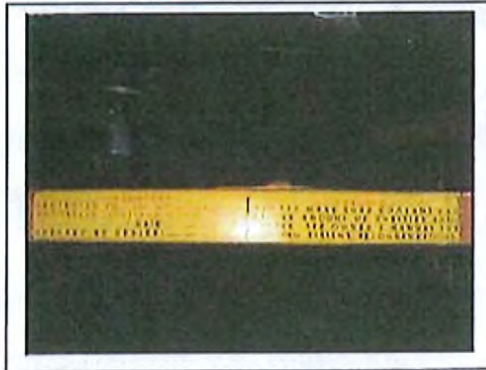
1969 PLYMOUTH Belvedere



Typical starting Instructions.



Typical public law/Location.



Typical antifreeze decal/location.
Mopar=Early, Chrysler=Late



Typical idle label location.
To rear of fender tag.



Typical tire label/location.



Typical jacking Instructions/location.

USED ONLY FOR REFERENCE OF DECAL PLACEMENT ON THIS YEAR & MODEL OF VEHICLE.
We recommend Performance Car Graphics for all your decal needs. www.performancecargraphics.com
Copyright 2008 Galen V. Govler

Spare tire & wheel=missing.



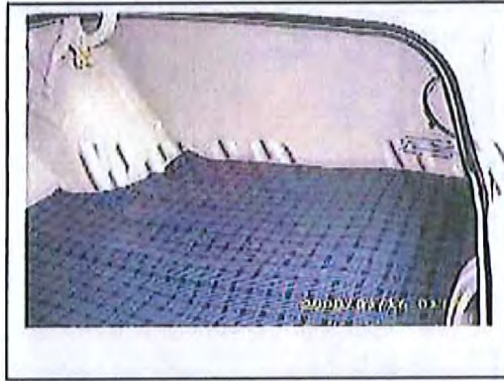
Trunk lid.



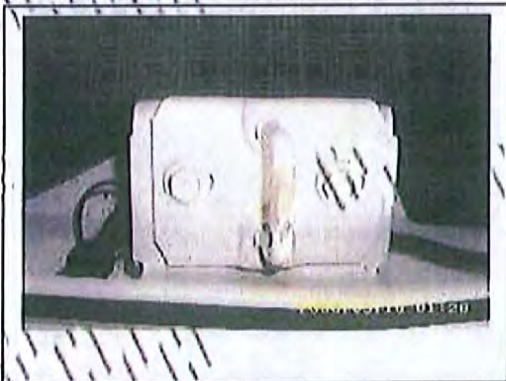
LH quarter panel/jack/floor.



RH quarter panel/mat/battery.



Trunk latch on body.



RH trunk hinge.



DETAILED APPRAISAL

G.T.S./Galen V. Govlor
P.O. Box 518
Prairie du Chien, WI 53021-0518
(608) 326-0346

This is to certify that I am a recognized authority on 1962-1980 DODGE, CHRYSLER & PLYMOUTH Automobiles.
I herewith certify that I have this day examined the following listed and described articles, for the person named below:

NAME: SJ & F Material Handling
ADDRESS: 211 Baker Avenue W.
CITY & STATE: Winsted, MN 55395

I estimate the value as listed for insurance or other purposes at the current retail value, excluding Federal and other taxes.
In making this appraisal, I **DO NOT** agree to purchase or to replace the articles.

DESCRIPTION	APPRAISED VALUE
1969 <u>PLYMOUTH Road Runner 2 Door Coupe</u>	\$ <u>80,000.00</u>
V.I.N. <u>R M 2 1 J 9 G 2 4 1 5 2 3</u>	MILEAGE <u>72,123</u>
AREA	CONDITION

01 BODY & PAINT: Top: V1X-Black in excellent condition. Bolton: W1-Alpine White in excellent condition.
Stripes: V21-Hood Performance Paint. Radiator support is painted black. (1)2 3 4 5 6

02 CHROME & GLASS: Moldings/Pot metal: In fine condition. Solox: Tinted windshield only. (Some scratched).
Side Markers are: Reflector only. Outside Mirrors: LH Manual Chrome. 1(2)3 4 5 6

03 INTERIOR & SEATS: Trim=H2W. Ft Seats=White Vinyl Bench. Black dash pad, seat belts & carpet.
Standard Instruments. Steering Wheel: Partial horn ring. Radio: AM. Options: Tachometer. 1(2)3 4 5 6

04 ENGINE: Optional 426 cu in, 426 hp Hemi w/2-4bbl Carter AFB Carburetors. Valve Covers: Stock. PCV: Missing.
Intake manifold: Stock/Aluminum. Exhaust manifold: Hooker Headers. Air Cleaner: Air Grabber. 1(2)3 4 5 6

05 ENGINE COMPT: 26" Radiator #: 2949054. Wiper Mr: 3-Speed. Reproduction "beep-beep" horn.
Battery: Series 27/Red cap. Battery Cables: Reproduction. Air grabber with Hemi pocket.
Ft Drum Brake Master Cylinder w/Manual Steering. (1)2 3 4 5 6

06 CHASSIS: Trans: A833 4-Speed w/9.75" Dana 60 Axle. Dual Exhaust w/X-pipe, Dynomax Mufflers & Tips.
Ft Brakes: 11" Drums. U-Joints: Strap. Rr Brakes: 11" Drums.
Floor pan is: primed and oversprayed. Ft Sway Bar. 1(2)3 4 5 6

07 TIRES/WHEELS: Size/Sidewall/Brand: P225/70R15 Radial T/A-Ft & P275/60R15 Comp T/A-Rr.
Width/Style: 15" American Racing 5-Spoke Wheels. Has 4-16x6" stamped steel wheels w/Caps aside. 1(2)3 4 5 6

08 TRUNK: Everything present and in excellent condition (except as noted) Quarter panels: Original.
Trunk floor: Restored. Trunk mat: Reproduction Gray/Plaid.
Bumper Jack: is missing. Spare tire & wheel are missing. 1 2(3)4 5 6

09 SAFETY CK: Everything in excellent working condition, except for license plate light. (1)2 3 4 5 6

10 OVERALL IMPRESSION: Restored to day 2 condition with a few modifications to wheels & drivetrain.
1 of 194 4-Speeds built. Deduct for accuracy of restoration. 1(2)3 4 5 6

MODIFICATIONS/RMKS: Added: Dimmer switch prommel, Petronis Ignition, Radial Tires, Gauges, 8-track player, etc.
Incorrect: Antenna, Black Headliner, Plymouth Radio, Oil caps, Coll, Oil pan, Steering gear, LH rear spring, etc.
Missing: Starting instructions, Jack assembly, Spare tire and wheel, Heat tubes and oil heat shield, Resonators, etc.
NOTE: Complete drivetrain is not original to car including K-frame, engine, transmission and axle.

NUMBERS MATCHING: ENGINE TRANSMISSION 1-BODY-2 FENDER TAG BROADCAST
In consideration of present condition = GRADE 1.8 SOURCE: OLD CARS PRICE GUIDE: MOYR 2008

The foregoing Appraisal is made with the understanding that the Appraiser assumes no liability with respect to any action that may be taken on the basis of this Appraisal.

09-14-2008
APPRAISAL DATE

Galen V. Govlor
APPRAISER

No. 089388



P.O. Box 516
Prairie du Chien, WI 53821-0516 U.S.A.
www.galengovier.com
gts@mhto.net

SJ&F Material Handling
% Frank Sterner
211 Baker Avenue West
Winsted, MN 55395

No. 089388

Dear Frank,

This detailed visual inspection also includes a 10-category written report, a decoding of the fender tag when possible, a visual inspection certificate and a "Galen's Registry" document.

Herein is the summary of the visual inspection on the 1969 PLYMOUTH Road Runner 2 Door Coupe VIN RM21J9G241523 I did on September 14, 2008

RH front view. LH front view.



RH rear view. LH rear view.



4. Fender tag-found underhood near battery, VIN is on the bottom row of the tag. In my opinion, this is an original fender tag. Enclosed is a decoding of the fender tag and some related paperwork.



Photo of Owners Manual (File photo).



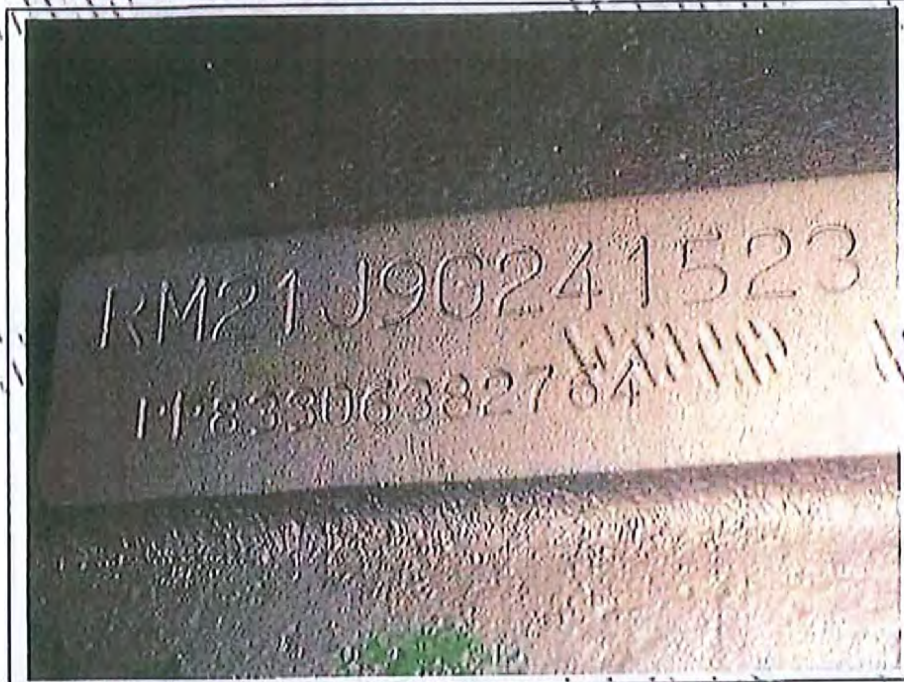
5. VIN stamped on engine-found on passenger side lower block.
This is not the original engine for the vehicle.



- A. The casting date on a Hemi is on the drivers' side of the block, behind the starter.
The casting date is: 1-26-88.



6. VIN stamped on New Process A833 Transmission-found on passenger forward side of the manual transmission case.
 - A. The numbers are obviously re-stamped.
This is not the original transmission for the vehicle.



- A. The casting date of the 4-Speed manual transmission is found on the drivers' side forward of the side cover. The date looks to be 10-23-68 (October 23, 1968).



This vehicle comes with no factory (or Dealer) documentation specific to this VIN.

Summary:

Engine Cast:	01-26-1968	<NOT NUMBERS MATCHING
Engine Assembled:	04-22-1968	HEMI-BOTTOM END
Transmission Cast:	10-23-1968	
Transmission Assembled:		< NOT NUMBERS MATCHING

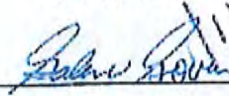
The scheduled production date of the 1969 PLYMOUTH Road Runner 2 Door Coupe is on or about 328-March 28, 1969. All original items on the vehicle should be dated before that date.

NOTE: LH & RH is determined from the driver's seat. LH = Drivers side of the vehicle.

With respect to the documents available from our web site, neither Galen's Tag Service, LLC nor any of its employees make any warranty, expressed or implied, including but not limited to the warranties of merchantability and fitness for a particular purpose. Further, neither Galen's Tag Service, LLC nor any of its employees assume any legal liability or responsibility for the accuracy, completeness or usefulness of any information, apparatus, product or process disclosed; nor do they represent that its use would not infringe upon privately owned rights.

If there is anything else I can do for you, please do not hesitate to call or write.

Keep the Faith,



Galen V. Govier

GVG/gg

Rear window/Top.



Model nameplate.



View of fuel inlet.



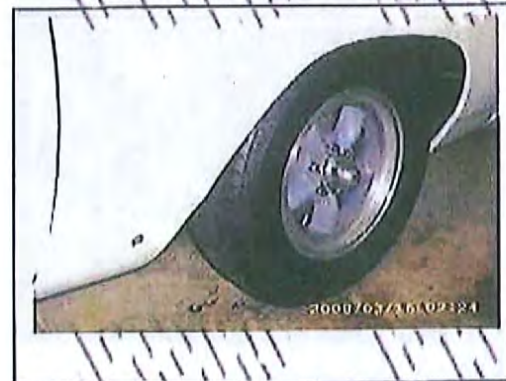
License plate/Screws.



Rear tire & wheel.



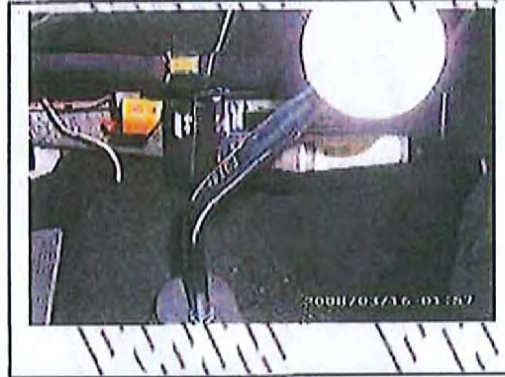
Front tire & wheel w/Pentastar.



LH Lower dash/Pedals/Dimmer switch.



Hurst Shifter.



LH door panel.



RH door panel.



Seat belt buckle.



RH upper dash.



Heml wiring connector.



Carburetors/Linkage.



Distributor.



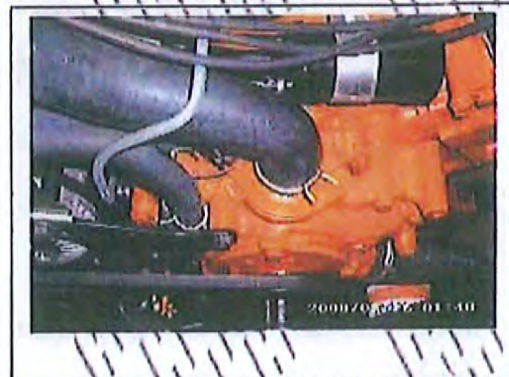
Throttle cable & bracket.



Alternator.



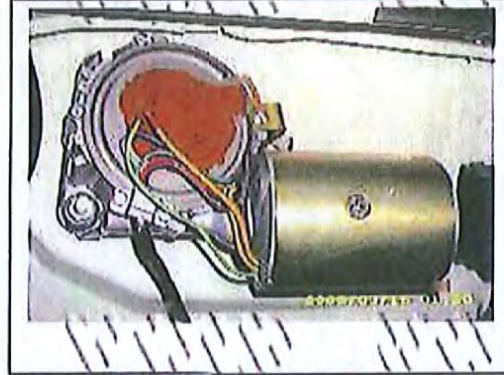
Water pump/Housing.



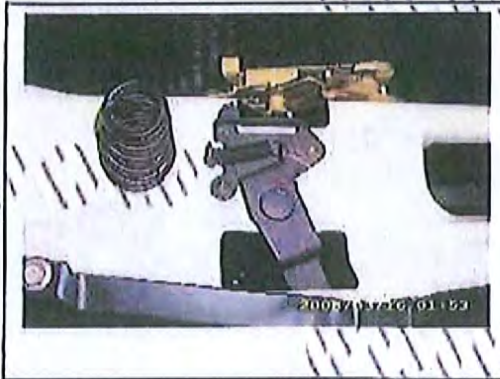
26" Radiator width w/Fan shroud.



Wiper motor.



Hood latch on body.



Hood latch on hood.



Lower steering column.



Manual steering gear.

